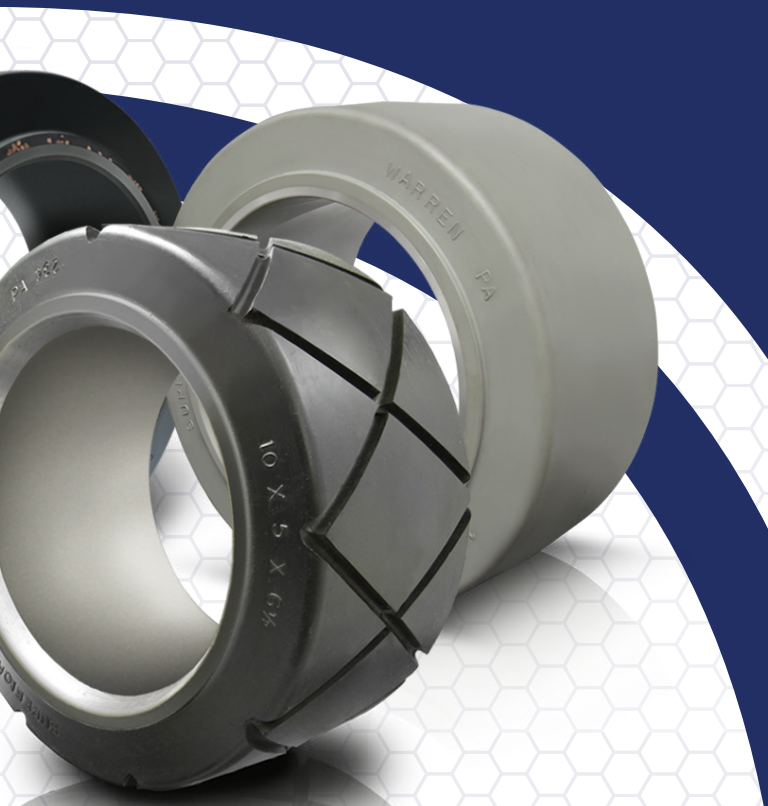


RUBBER PRESS-ON TIRES

American Made Industrial Tires

- **3 Compounds & 2 Additives** with multiple tread design options.
- **Highest Quality** from strictest quality control production standards.
- **Highest Reliability** providing better wear-life, traction, and durability.
- **Engineered to Spec** as a supplier to major OEMs.



HIGH PERFORMANCE
LOW MAINTENANCE
SOLID RUBBER INDUSTRIAL TIRES

SUPERIOR
TIRE & RUBBER CORP.
ENGINEERING REVOLUTION™



1.800.289.1456 | www.SuperiorTire.com

COMPOUNDS

Natural Rubber

The best rubber compound for wear-life, durability, and low rolling resistance.

Universal

High grade synthetic rubber compound with excellent wear-life and chunk resistance. Most popular solution.

Gray Non-Marking

Gray non-marking compound designed for minimal marks on floors, also made from high traction compound for safe operation and braking.

ADDITIVES

Walnut Embedded

Unique compound designed for higher traction in wet conditions on smooth floors.

Wire

Durable compound with steel reinforcing wire inside designed to withstand abusive environments and offer the highest chunk resistance.

TREAD STYLES



Center Groove (CG)

Allows for heat dissipation, reducing risk of meltdown in long runs applications.



Diagonal Groove (DG)

Highest water dissipation, the most effective for wet floor conditions.



X-Groove (XG)

Reduces hydroplaning in standing water and improves traction on wet floors.



Siped

Ultra-fine diagonal cuts in the tread surface - best option for damp or icy floor conditions.

SUPERIOR
TIRE & RUBBER CORP.
ENGINEERING REVOLUTION™



1.800.289.1456 | www.SuperiorTire.com